

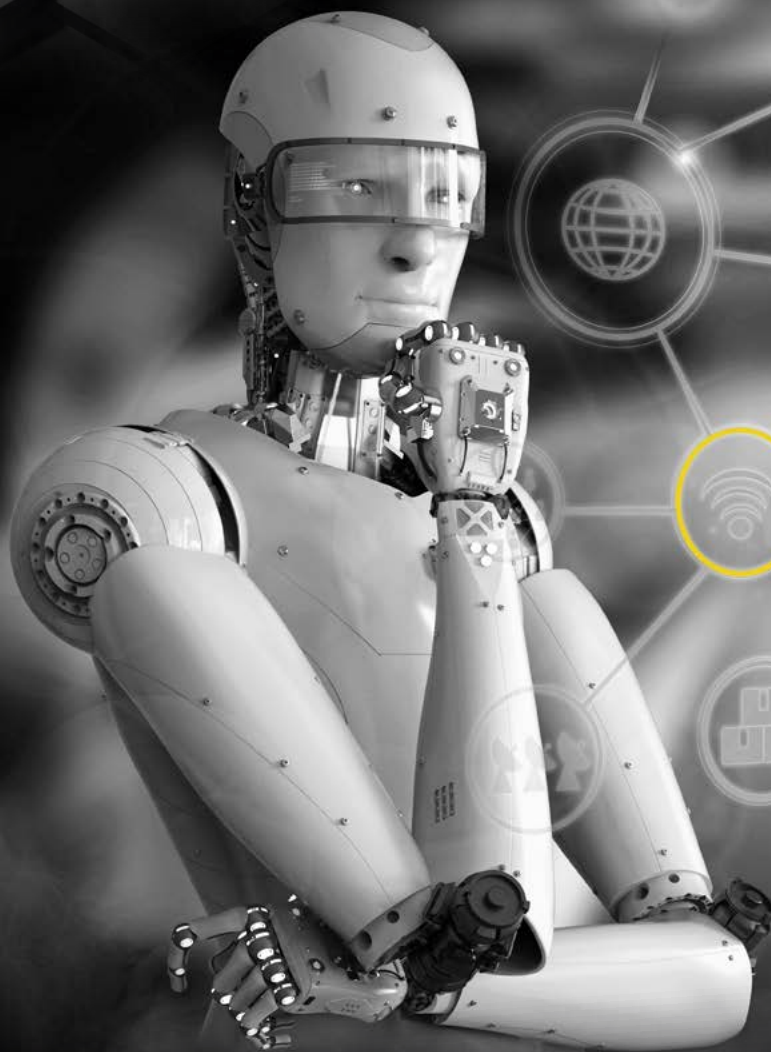
zenitel

HEAR, BE HEARD,
BE UNDERSTOOD
ANYWHERE, ANYTIME

IC-EDGE

BECAUSE

■ when communication is critical



HAVE AUDIO CHALLENGES?

Most situations you find yourself in require the ability to communicate clearly. Many settings pose situational challenges, ranging from loud background noise to environmentally demanding conditions, such as industrial and offshore locations. Add in a layer of technical constraints

- such as needing secure, reliable and clear audio communication in spaces where you don't have room for a separate server setup or need to start small but anticipate expansion to your intercom system or integrate it with existing technology - and you're left with a limited number of options.

SAY HELLO TO IC-EDGE

The next-generation intelligent communication system that delivers seamless integration and unrivaled sound quality, security and ease of use, right out of the box. Minimize your hardware needs, maximize your audio quality and performance and consolidate your setup into a centralized system requiring no external server.

AUDIO QUALITY

Your ability to hear, be heard and be understood in any situation is essential. IC-EDGE systems are used in the world's most demanding and challenging environments, due to their unrivaled sound and audio quality.

SEAMLESS INTEGRATION

IC-EDGE offers seamless integration with leading risk, resilience and security solutions by adopting open standards and out-of-the-box connectivity.

SCALABILITY

Your communication needs can change and grow over time. IC-EDGE can scale up to 64 devices. For larger and more complex systems we recommend our new ICX-AlphaCom platform.

EASY TO DEPLOY & OPERATE

By embedding server capabilities in IC-EDGE, system configuration and maintenance is easier and saves time, with automatic software updates and Vingtor-Stentofon station discovery.



"The next generation of **Intelligent Communication systems** delivers unrivaled levels of **operational efficiency, security** and ease of use"

BE REACHABLE, WHEREVER YOU ARE!



INTEGRATE WITH MANY DIFFERENT SYSTEMS



Our Technology Partners



EASY SETUP & INSTALLATION

Setting up IC-EDGE can be done by manually logging into each station and entering the settings or using our dedicated VS intercom management tool (IMT) to discover, update and configure the system.

- ▶ EASY TO SET UP
- ▶ EASY TO EXPAND
- ▶ EASY TO MAINTAIN

STEP 1

Choose stations for your project and connect them to a (PoE) LAN.



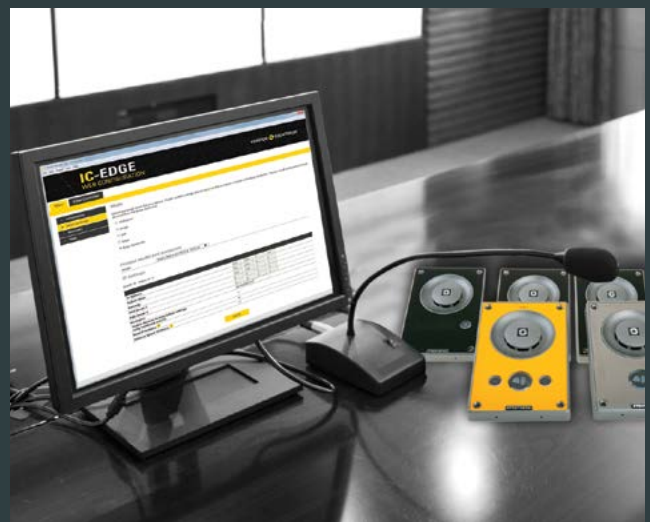
STEP 2

Choose which unit will operate as the IC-EDGE controller.



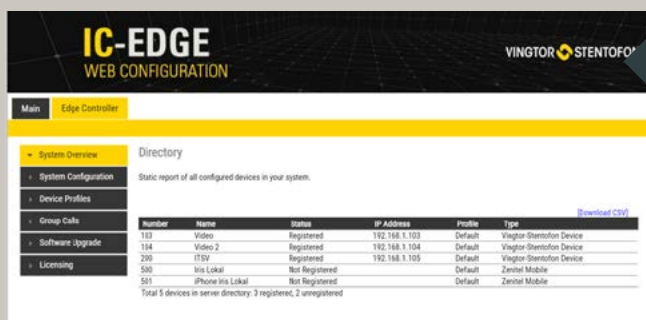
STEP 3

Stations are automatically discovered. Configure them either via web interface and/or via our dedicated VS-IMT configuration tool.



STEP 4

Log in to the IC-EDGE controller and enable the Enterprise package in order to use the SDK or set up a trunk to another (remote) IC-EDGE system.



Number	Name	Status	IP Address	Profile	Type
103	Vision	Registered	192.168.1.103	Default	Vingtor-Shentofon Device
104	Vision 2	Registered	192.168.1.104	Default	Vingtor-Shentofon Device
200	ITSV	Registered	192.168.1.105	Default	Vingtor-Shentofon Device
500	Iris Lokal	Not Registered		Default	Zenitel Mobile
501	iPhone Iris Lokal	Not Registered		Default	Zenitel Mobile

Total 5 devices in server directory: 3 registered, 2 unregistered



BECAUSE SECURITY IS AT STAKE

DEFENSIBILITY – AT THE CORE OF ALL WE DO

Our cybersecurity solutions comply with stringent IT requirements for mission-critical systems – they are not only highly available, reliable, scalable and maintainable, but also provide adequate defense from outside threats and attacks.

IC-EDGE Devices

Turbine Series



TCIS-1



TCIS-2



TCIS-3



TCIS-4



TCIS-5



TCIS-6



TCIV-2



TCIV-3



TCIV-5



TCIV-6



TMIS-1



TMIS-2



TFIE-1



TFIE-2



TFIE-6



TFIX-1



TFIX-2



TFIX-3



ECPIR-3P

Mobile App



Desktop Series



ITSV-1



SDS-1



VS-CLIENT

Integration Kits



TKIS-2



TKIE-2



IP-LCM

Speakers



ELSII-10H



ELSIR-10C

See all products at zenitel.com/products.